

# CBE JU WIDENING PARTICIPATION STRATEGY

September 2023

## Table of Contents

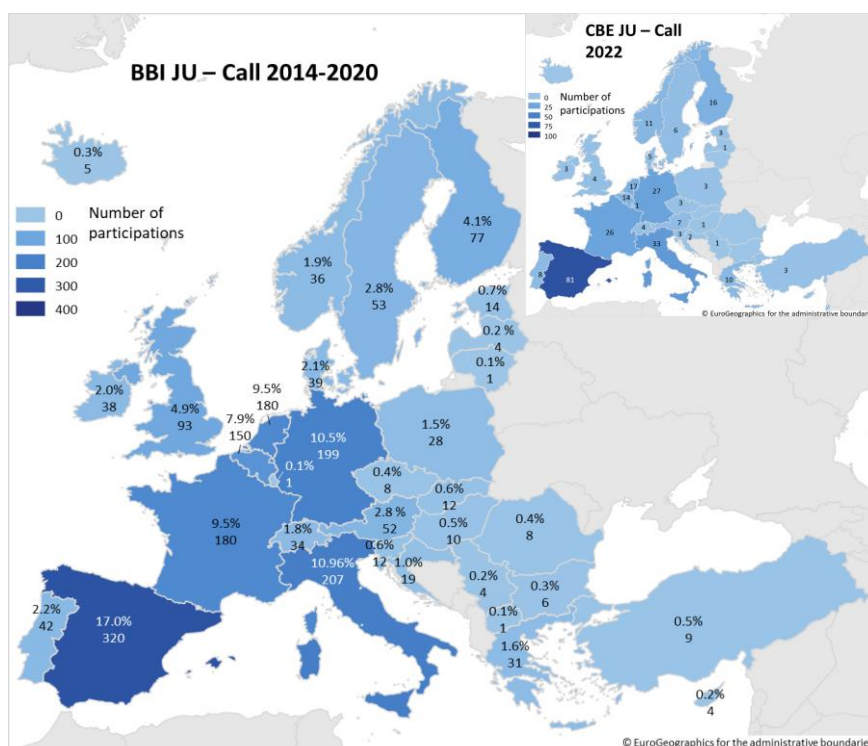
1. Background and rationale .....	2
2. Objectives .....	3
3. Target countries and regions.....	3
4. Actions .....	3
5. Main actors .....	4
Annex I – BBI JU baseline countries’ analysis .....	6
Annex II – BBI JU baseline regions’ analysis* .....	7
Annex III – Inventory of EC-funded projects relevant for the scope of this strategy .....	10
Annex IV – BIC country reports .....	12

# 1. BACKGROUND AND RATIONALE

**Increasing geographical outreach of calls for proposals** has been a goal of BBI JU since its establishment. Over the years, the Programme Office, the European Commission and BIC, along with the States Representative Group, undertook several actions<sup>1</sup> to promote and raise awareness about the BBI JU programme at European and national levels, as to **encourage a wider and more inclusive participation** of underrepresented countries, such as **Central and Eastern European Countries**. As a result of these joint efforts, the last BBI JU Call in 2020 registered a 63% increase in the number of proposals submitted by Central and Eastern European countries, as compared with 2019. Moreover, by the end of the BBI JU programme, three out of thirteen Flagships were established in one of these countries (Estonia, Latvia and Romania).

The detailed analysis of the geographical distribution of participants in the BBI JU calls in the tables in annex, shows the gap described above between Western and Eastern Europe. This trend was also confirmed by the distribution of participants in the first CBE JU Call for proposal of 2022 (map on the right-hand side).

Stimulating research activities in countries and regions with underdeveloped R&I capacity for bio-based systems is also a stated priority of the **CBE JU Strategic Research and Innovation Agenda (SRIA)**<sup>2</sup>. The SRIA calls explicitly to exploit the local bioeconomy potential of these countries and regions, by increasing the awareness of their research agencies about EU R&I funding programmes and agendas for industrial bio-based systems.



In this context, at its meeting of 8 December 2022, the Governing Board requested the CBE Programme Office to draw up a **widening participation strategy for the CBE JU programme**,

<sup>1</sup> BBI JU widening strategy and action plan  
<sup>2</sup> SRIA strategic priorities 4.1.2.1 & 4.1.2.2

including a list of concrete actions to step up the participation of under-represented countries. This strategy, together with the first action plan for the period 2023-2024, addresses this request.

## 2. OBJECTIVES

The CBE JU widening participation strategy has a two-fold objective:

1. **Help stimulating research and innovation in countries and regions with less mature bio-based ecosystems**
2. **Step up the participation of less represented countries and regions in the CBE JU programme** and ensure their meaningful involvement in all actions of the CBE JU.

## 3. TARGET COUNTRIES AND REGIONS

After an in-depth analysis of the BBI JU data (reported in annex I), it is proposed to focus the CBE JU widening strategy on:

1. **EU countries that are included in the list of widening countries under Horizon Europe<sup>3</sup>** and that were underrepresented through the BBI JU programme implementation. Based on the analysis of the bottlenecks, some actions will be relevant for all widening countries, while others may be more adapted and tailored to a specific country or to a cluster of them.
2. **Regions that are classified as “less developed” or “transition” by the [cohesion policy](#),** and that were underrepresented through the BBI JU programme implementation. Considering the high number of relevant regions, macro-regional areas (e.g., Central-Eastern European, Mediterranean, Baltic, Atlantic, etc.) could be considered in the development of targeted actions, upon common identified bottlenecks or characteristics (e.g., feedstock availability).

## 4. ACTIONS

The strategy will capitalise on BBI JU widening actions and will be implemented via a series of concrete measures with the involvement of different stakeholders. To this end, **two action plans** will be developed, covering the two main periods of the CBE JU programming: **2023-2024** and **2025-2027**. The first action plan 2023-2024 will focus primarily on widening countries. The second action plan will take stock of the results and lessons learnt from the first biennium and will include actions relevant at regional/macroeconomic level. On this basis, existing actions will be refined, and new ones defined to address the remaining challenges.

---

<sup>3</sup> Bulgaria, Croatia, Cyprus, Czechia, Estonia, Greece, Hungary, Latvia, Lithuania, Malta, Poland, Portugal, Romania, Slovakia, Slovenia (defined in Art. 349 TFEU).

**SRIA KPI n° 10**, aiming at *“improving the participation of regions and countries with high unexploited potential and strategic interest to develop it”*, will be used to monitor the effect of the implemented actions, and the CBE Programme Office will report on related advances via its annual activity report. In addition, the CBE JU call for proposals will be used to monitor progress against the set baseline, represented by the combined results of BBI JU calls in terms of applications as well as participation in proposals retained for funding. The outcomes of the CBE JU 2022-2024 calls will help defining any additional priorities needed for the 2025-2027 period.

To fulfil the objectives of the strategy, two main priority activities are identified, along with a first non-exhaustive list of actions for each of them:

- **A1. Understanding the bottlenecks and identifying opportunities** for (a greater) participation of the underrepresented countries and regions in the CBE JU programme is key to **ensure adequate corrective actions** to be implemented at different levels of the programming cycle.
- **A2. Increasing awareness and understanding of the CBE JU programme and the potential success of applicants** from underrepresented countries and regions in the CBE JU programme:

For each target country, the most suitable actions will be selected. To help identifying and prioritising the actions to be implemented, the **series of indicators** were elaborated at country and regional levels (cf. annex I and annex II for a visual representation of the main indicators).

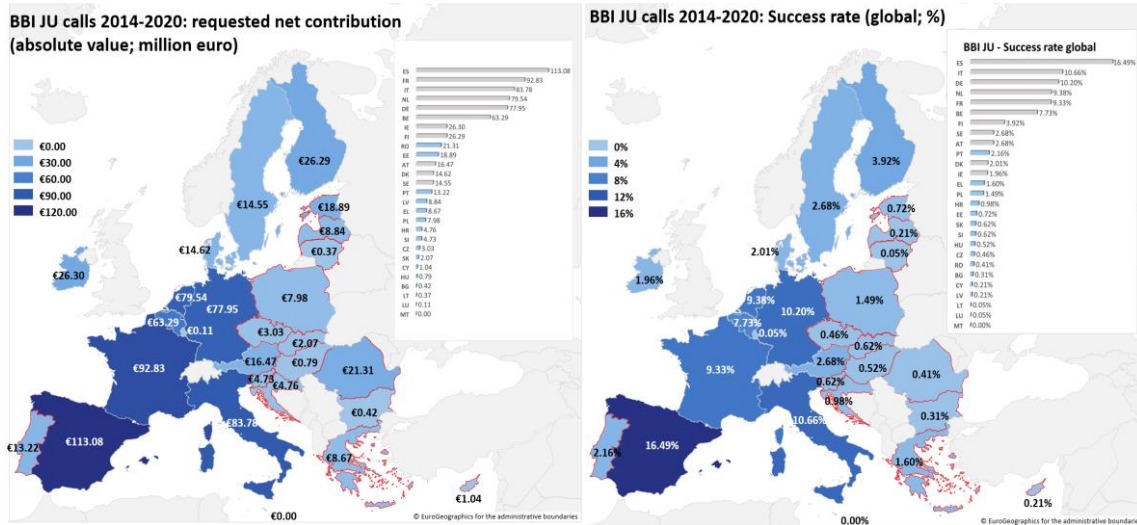
## 5. MAIN ACTORS

- **CBE JU Programme Office** will oversee the development of the strategy together with the EC and BIC and in close cooperation with the CBE JU State Representative Group and will be responsible to monitor the implementation of the agreed actions as part of its annual reporting obligations.
- **BIC** will provide a key contribution by liaising and mobilising companies, including SMEs, other relevant stakeholders in the value chain, active or aiming to be active in the identified underrepresented widening countries and regions, and ensuring synergies through **(industrial) clusters and associations**, already active at the national and regional level.
- **EC** will play a significant role in ensuring synergies with other widening-related actions already envisaged in the context of the Horizon Europe programme, and in fostering coordination with Cluster 6 initiatives and NCPs.
- **CBE JU states’ representatives group** will be essential for raising awareness and supporting actions and initiatives related to widening participation in their respective countries and regions, as well as for reinforcing the synergies with their NCPs.
- **National Contact Points**, such as [Care4bio NCP network for Cluster 6](#) and [WIDERA NCP network](#) will be pivotal in advising applicants and guiding them to increase the success rate of their country.
- **CBE JU Scientific Committee** can support the strategy with ad-hoc actions, within the remit of its mandate. To note: 1/3 of the SC comes from the widening countries (Portugal – SC Chair – along with Greece, Poland, Czechia and Hungary).

- **Other relevant existing networks and clusters** already active in regions of interest for this initiative, such as [ERRIN](#), the [BIOEAST initiative](#) for the Central and Eastern EU Member States, [EEN](#), and other relevant partnerships for the Mediterranean, the Baltic, and the Atlantic regions (e.g. [PRIMA](#)).

Each actor will contribute based on its mandate and depending on the action envisaged and the country targeted.

# ANNEX I – BBI JU BASELINE COUNTRIES' ANALYSIS



Country code	Number of applications	Number of participations	Number of participations by PRC <sup>1</sup>	Number of participations (as COO)	Number of FLAGS	Success rate global (% of total proposals)	Net requested EU contribution (M€)	Net requested EU contribution (€/M€ GDP)
ES	1691	320	168	42	1	16,49	113,08	93,70
IT	1278	207	133	9	2	10,66	83,78	47,01
DE	1033	198	118	11		10,20	77,95	21,64
NL	689	182	133	13	2	9,38	79,54	92,88
FR	793	181	120	14	4	9,33	92,83	37,12
BE	713	150	81	7		7,73	63,29	125,99
FI	427	76	41	8		3,92	26,29	104,53
AT	317	52	27	3		2,68	16,47	40,55
SE	308	52	29	3		2,68	14,55	27,10
PT	324	42	24	4		2,16	13,22	61,64
DK	297	39	24	5		2,01	14,62	43,43
IE	218	38	17	3		1,96	26,30	61,69
EL	394	31	16	2		1,60	8,67	47,73
PL	167	29	16	1		1,49	7,98	13,88
HR	101	19	17	0		0,98	4,76	81,75
EE	39	14	11	2	1	0,72	18,89	600,67
SI	128	12	5	1		0,62	4,73	90,51
SK	52	12	10	0		0,62	2,07	20,98
HU	70	10	9	0		0,52	0,79	5,13
CZ	92	9	5	0		0,46	3,03	12,71
RO	88	8	5	0	1	0,41	21,31	88,34
BG	56	6	3	0		0,31	0,42	5,87
LV	54	4	2	1	1	0,21	8,84	262,39
CY	38	4	4	0		0,21	1,04	43,22
LU	14	1	0	0		0,05	0,11	1,59
LT	42	1	1	0		0,05	0,37	6,56
MT	23	0	0	0		0,00	0,00	0,00

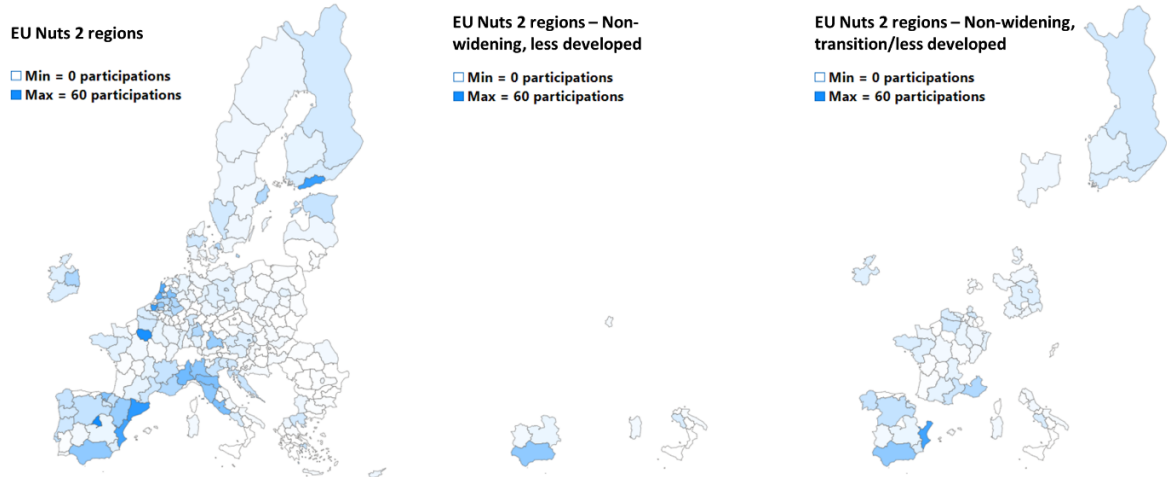
<sup>1</sup> PRC = private for-profit entities

Widening	non-Widening
----------	--------------

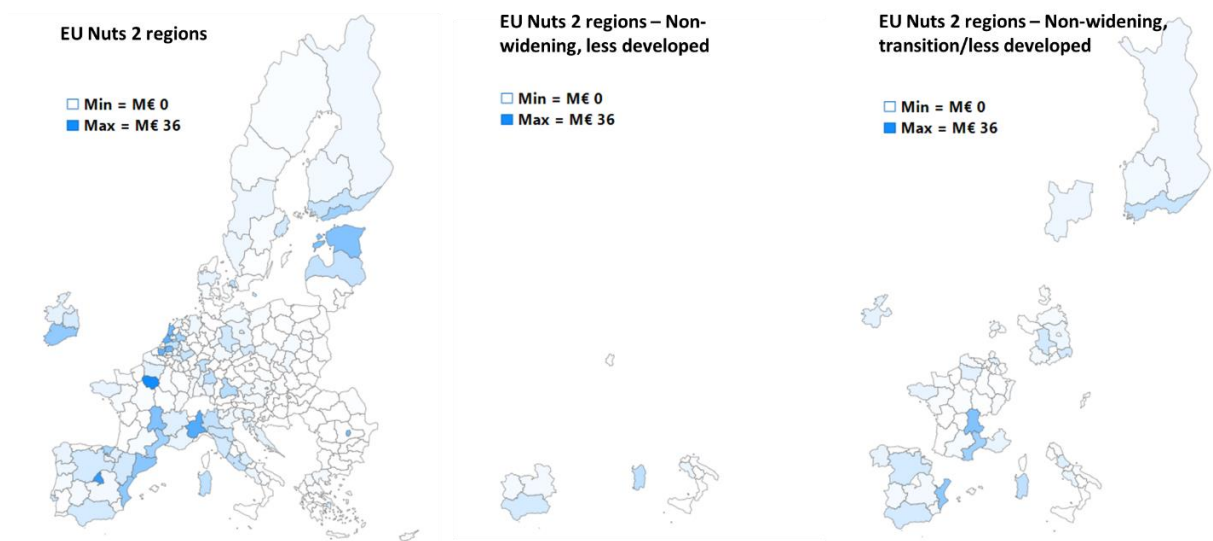
# ANNEX II – BBI JU BASELINE REGIONS' ANALYSIS\*

(\*) Outermost regions not included

## Number of participations (retained proposals) in absolute numbers



## JU requested net contribution in absolute numbers



### Less developed regions from non-widening countries

Country code	Region code	Name	Nr of participations	Net requested EU contribution (M€)	Net requested EU contribution (€/M€ GDP)
ES	ES61	Andalucía	28	6,32	41,96
IT	ITF3	Campania	9	2,87	18,89
ES	ES42	Castilla-La Mancha	5	1,75	44,18
ES	ES43	Extremadura	3	1,59	82,20
IT	ITG2	Sardegna	3	9,49	239,16
BE	BE34	Luxembourg	2	0,58	83,65
IT	ITF4	Puglia	2	0,82	22,14
ES	ES63	Ciudad Autónoma de Ceuta	0	0,00	0,00
ES	ES64	Ciudad Autónoma de Melilla	0	0,00	0,00
IT	ITF2	Molise	0	0,00	0,00
IT	ITF5	Basilicata	0	0,00	0,00
IT	ITF6	Calabria	0	0,00	0,00
IT	ITG1	Sicilia	0	0,00	0,00

### Transition regions from non-widening countries

Country code	Region code	Name	N° of participations	Net requested EU contribution (M€)	Net requested EU contribution (€/M€ GDP)
ES	ES52	Comunidad Valenciana	48	16,88	161,20
FR	FRL0	Provence-Alpes-Côte d'Azur	20	3,18	19,70
ES	ES41	Castilla y León	15	6,40	115,57
ES	ES11	Galicia	14	3,39	57,44
FR	FRJ1	Languedoc-Roussillon	12	14,07	190,14
FI	FI1D	Pohjois- ja Itä-Suomi	11	2,12	46,26
FR	FRE2	Picardie	11	4,09	85,57
BE	BE33	Liège	10	4,08	131,79
ES	ES23	La Rioja	10	3,03	373,04
FI	FI1C	Etelä-Suomi	9	7,86	180,70
FR	FRE1	Nord-Pas de Calais	9	1,36	11,99
FR	FRH0	Bretagne	9	3,55	35,61
DE	DE40	Brandenburg	8	2,32	30,97
ES	ES62	Región de Murcia	8	1,25	41,76
IE	IE04	Northern and Western	8	3,82	144,59
DE	DEE0	Sachsen-Anhalt	7	6,60	103,95
FR	FRG0	Pays de la Loire	7	1,07	9,19
BE	BE22	Limburg	6	1,33	47,53



FI	FI19	Länsi-Suomi	6	1,97	37,80
FR	FRF1	Alsace	6	1,00	16,75
FR	FRJ2	Midi-Pyrénées	6	1,31	13,85
FR	FRK1	Auvergne	6	18,84	506,69
BE	BE32	Hainaut	5	0,63	18,99
DE	DED2	Dresden	5	6,04	119,21
FR	FRF2	Champagne-Ardenne	5	0,57	15,53
DE	DEG0	Thüringen	4	1,50	24,14
DK	DK02	Sjælland	4	0,98	31,22
FR	FRD1	Basse-Normandie	4	0,70	18,10
FR	FRF3	Lorraine	4	0,32	5,68
SE	SE31	Norra Mellansverige	4	2,52	80,64
DE	DE80	Mecklenburg-Vorpommern	3	1,39	29,85
DE	DE93	Lüneburg	3	0,17	3,45
DE	DED4	Chemnitz	3	0,73	17,76
FR	FRB0	Centre - Val de Loire	3	0,70	9,77
FR	FRC2	Franche-Comté	3	0,90	29,87
IT	ITF1	Abruzzo	3	4,85	204,42
IT	ITI3	Marche	2	0,56	6,68
NL	NL12	Friesland	2	1,81	86,09
BE	BE35	Namur	1	0,17	12,82
ES	ES53	Illes Balears	1	0,26	9,60
FR	FRC1	Bourgogne	1	0,25	5,48
IT	ITI2	Umbria	1	0,38	12,13
FR	FRI1	Aquitaine	1	0,00	0,00
FR	FRI2	Limousin	1	0,00	0,00
FR	FRI3	Poitou-Charentes	1	0,00	0,00
NL	NL23	Flevoland	1	0,00	0,00
AT	AT11	Burgenland	0	0,00	0,00
DE	DEB2	Trier	0	0,00	0,00
ES	ES12	Principado de Asturias	0	0,00	0,00
ES	ES13	Cantabria	0	0,00	0,00
FR	FRD2	Haute-Normandie	0	0,00	0,00
FR	FRM0	Corse	0	0,00	0,00
NL	NL13	Drenthe	0	0,00	0,00

# ANNEX III – INVENTORY OF EC-FUNDED PROJECTS RELEVANT FOR THE SCOPE OF THIS STRATEGY

## Projects ended before 01.01.2023

Name of the project	Main feature	Relevance for CBE JU Widening Strategy	Countries/Regions covered
<a href="#">CELEBio</a> <b>Central European Leaders Of Bioeconomy Network</b> (BBI JU 2019-2020)	Provided <a href="#">a series of reports</a> that are background information and guidelines for developing national action plans to setup bio-based production chains. Also provided is an <a href="#">inventory</a> of potential actors for bioeconomy deployment in these countries. It conducted a characterisation of agricultural, forestry and waste sector to provide a <a href="#">summary report</a> of availability of biomass residues in the countries.	Availability of data on biomass and key elements on bioeconomy actors mapping are available.	Bulgaria, Czechia, Hungary, Slovakia, Slovenia
<a href="#">POWER4BIO</a> <b>emPOWERing regional stakeholders for realising the full potential of european BIOeconomy</b> (Horizon 2020, 2018-2021)	The project developed a set of <a href="#">KPIs</a> to assess the performance of the bioeconomy in regional ecosystems, as well as an <a href="#">inventory</a> of public policies and regulation to support bio-based business models at regional level as well as developing regional bioeconomy <a href="#">strategies</a> and <a href="#">roadmaps</a> in CEE regions.	Activities on KPI and regional bioeconomy strategies are interesting. Furthermore, a link for synergies with the <a href="#">CAP</a> has been developed, which is relevant for agri-biomasses.	Poland, Hungary, Czechia
<a href="#">BE-Rural</a> <b>Bio-Based strategies and roadmaps for enhanced rural and regional development in the EU</b> (Horizon 2020, 2019-2022)	BE-Rural created five regional Open Innovation Platforms for the participatory development of bioeconomy <a href="#">strategies</a> and roadmaps co-created by engaging with different actors and stakeholders. A summary <a href="#">report</a> on small-scale bio-based business models and their market potentials has also been produced.	Activities for mapping of baseline of bioeconomy development and bioeconomy strategies. Vast diversity in term of bioeconomy sectors.	Bulgaria, Latvia, North Macedonia, Poland, Romania
<a href="#">BIOEASTsUP</a> <b>Advancing Sustainable Circular Bioeconomy in Central and Eastern European countries</b> (Horizon 2020, 2019-2023)	BIOEASTsUP brought together different government stakeholders within the 11 CEE highlighting their respective national governments agendas, the agri-food sector, and support for the national bioeconomic strategies. The project developed a platform and a framework to supports member countries in the development of their national bioeconomy strategy.	Activities of capacity building and creation of a high-level platform of experts. Establishment of a macro-regional structure supporting the BIOEAST initiative and creation of a <a href="#">SRIA</a> to support countries in their <a href="#">bioeconomy development</a> .	Poland, Hungary, Czechia, Bulgaria, Estonia, Latvia, Lithuania, Slovakia, Slovenia, Romania

**Projects ongoing at the date of 01.01.2023**

Name of the project	Main feature	Relevance for CBE JU Widening Strategy	Countries/Regions covered
<a href="#">ROBIN</a> <b>Deploying circular BIOecoNomies at Regional level with a territorial approach</b> (Horizon Europe CL6 2022-2025)	ROBIN will study the regional bioeconomy governance models, and propose a toolbox aiming at supporting the development and operation of governance models towards circular bioeconomy transition.	Relevant methodological perspective and potential contents and contacts.	Central Macedonia, Greece, Zilina, Slovakia
<a href="#">BIOMODEL4REGIONS</a> <b>Supporting the establishment of the innovative governance models to achieve better-informed decision-making processes, social engagement and innovation in the bio-based economy</b> (Horizon Europe CL6, 2022-2025)	The project will focus on developing governance and business models applied to the municipal waste management and to the production, storage and transportation of the forest and agriculture biomasses.	Relevant methodological perspective and potential contents and contacts.	Slovakia, Western Macedonia (Greece)
<a href="#">BlueRev</a> <b>Revitalisation of European local communities with innovative business models and social innovation in the blue bio-based sector.</b> (2022-2025, Horizon Europe CL6)	The project aims at increasing awareness and promoting integration in the bio-based value chains with a focus on blue bioeconomy.	Relevant focus on blue bioeconomy and its territorial impact.	Estonia, Portugal
<a href="#">BIOLOC</a> <b>Bio-based and social innovation to revitalise European local communities</b> (Horizon Europe CL6, 2022-2025)	The project will evaluate the current bio-based value chain, propose solutions to valorise circular bioeconomy potential and launch co-creation initiatives to foster the inclusion of marginalised groups in bio-based value chains.	Relevant focus on the role of bio-based as development leverage in rural communities. Large involvement of Widening regions and countries.	Western Macedonia (Greece), Bulgaria, Slovakia, Croatia, Slovenia, Hungary, Czechia, Romania
<a href="#">BlueBioCluster</a> <b>Supporting European Coastal Regions In Their Transition To A Sustainable Blue Bioeconomy</b> (Horizon Europe CL6, 2022-2025)	The project aims at showcasing integrated circular value chains in the blue economy and develop tools to support business in the blue economy sector.	Relevant focus on blue bioeconomy and its territorial impact.	Estonia, Lithuania, Portugal
<a href="#">CEE2ACT</a> <b>Empowering the Central and Eastern European Countries to Develop Circular Bioeconomy Strategies and Action Plans</b> (Horizon Europe CL6, 2022-2025)	The project focuses on 10 CEE Countries. The project will create national bioeconomy hubs with relevant stakeholders from public and private sector to promote knowledge exchange, capacity building and develop guidelines and action plan for national bioeconomy strategy development.	Relevant methodological perspective and potential contents and contacts. Large involvement of widening regions and countries.	Bulgaria, Croatia, Czech Republic, Greece, Hungary, Poland, Romania, Serbia, Slovakia, Slovenia

## ANNEX IV – BIC COUNTRY REPORTS

BIC country reports map countries – particularly widening countries – bio-based potential and identify new opportunities for green and sustainable growth. The full series of countries' reports is available on BIC's website (excerpt below): [Mapping the bio-based potential in EU Member States](#) | [Bio-Based Industries Consortium \(biconsortium.eu\)](#)



Bio-based Industries Consortium

**Mapping Poland's bio-based potential**

Country Report

JULY 2023

Mapping Poland's bio-based potential

PDF



Bio-based Industries Consortium

**Mapping Portugal's bio-based potential**

FEBRUARY 2021

Mapping Portugal's bio-based potential

PDF



Bio-based Industries Consortium

**Mapping Lithuania's bio-based potential**

MAY 2020

Mapping Lithuania's bio-based potential



Bio-based Industries Consortium

**Mapping Latvia's bio-based potential**

MAY 2020

Mapping Latvia's bio-based potential