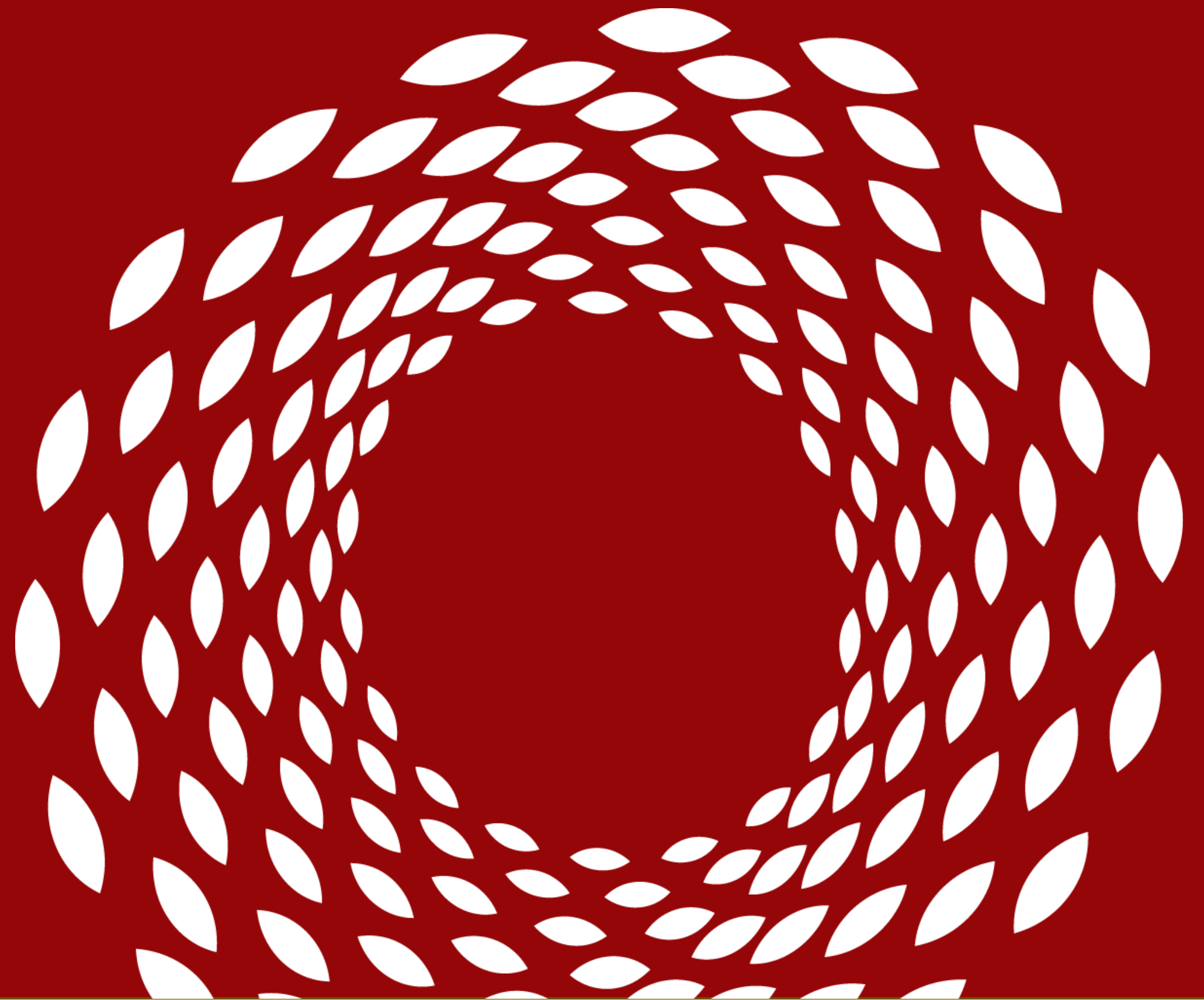


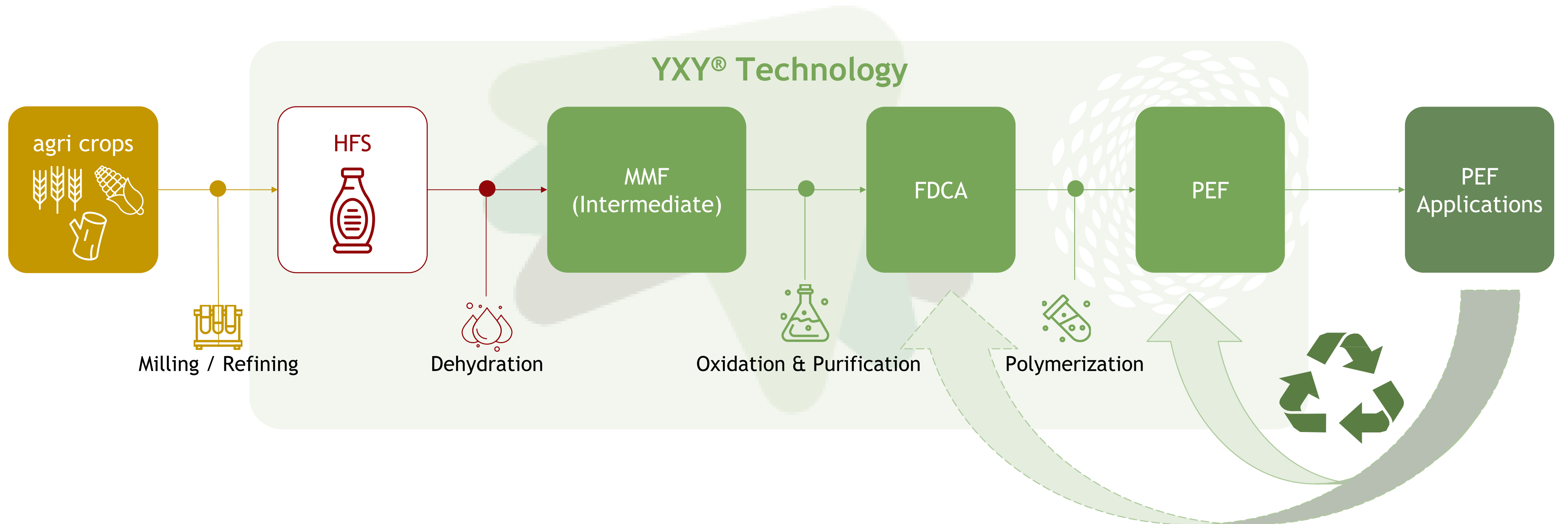
FDCA Flagship Plant

Learnings from a CBE-JU flagship project

Ed De Jong, VP Development | Avantium
CBE JU Matchmaking event, 22 April 2026



Enables the transformation to performance and renewable, building on existing installed base, up to recycling



Avantium's first-of-a-kind Flagship Plant on stream in 2026

Prove Technology at
5kta scale

Sale of PEF & FDCA at
commercial scale

Further **accelerate**
licensing
deployment

Progress

- Flagship **opening October 2024**
- Currently in **start-up and commissioning phase**
- **Production on stream in 2026**



NETHERLANDS
Chemie Park Delfzijl



22 October 2024: A historic moment!



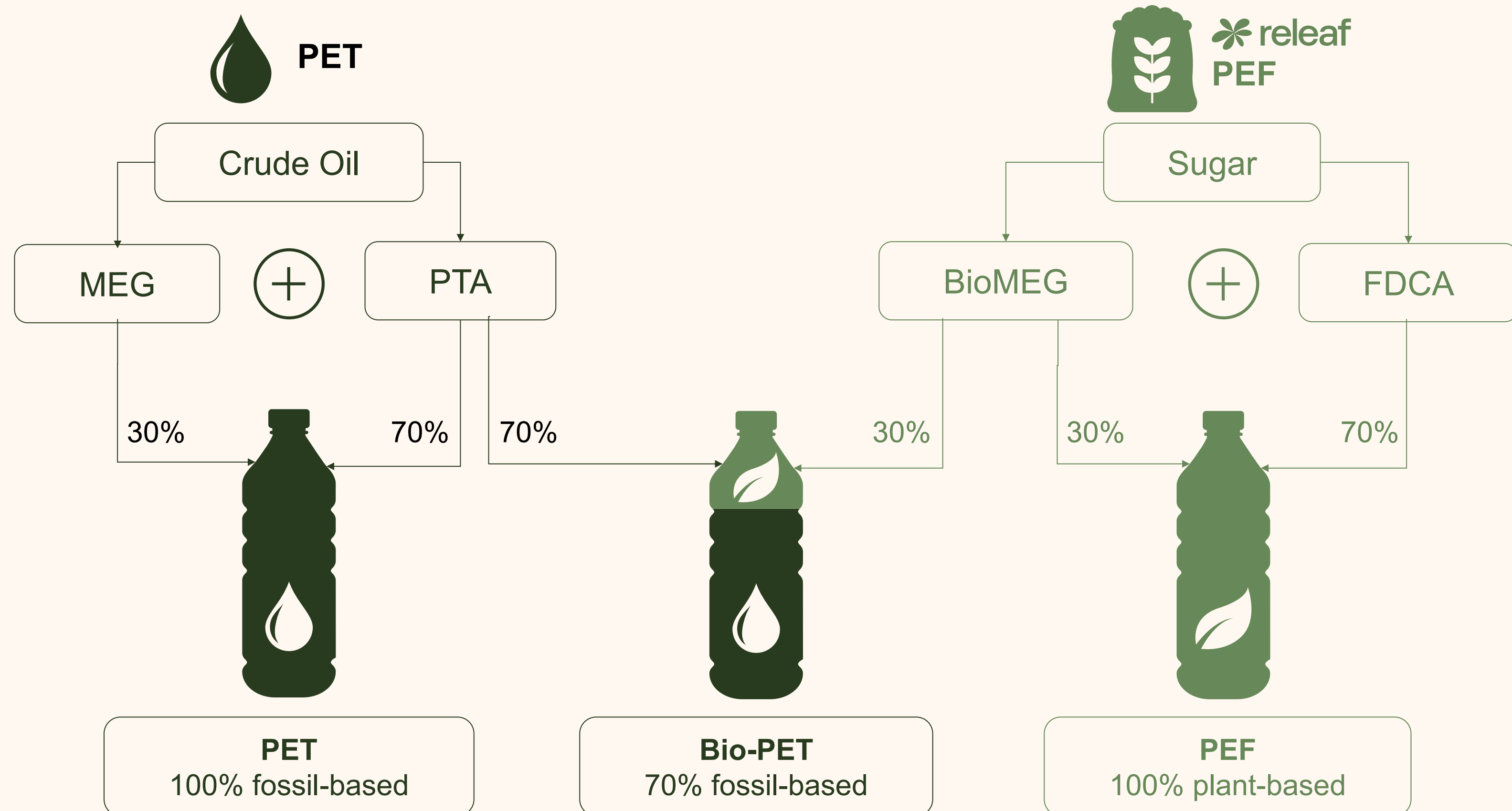
Official opening of Avantium's 5 ktpa flagship plant by Her Majesty Queen Máxima of the Netherlands

#CBEScaleUp 2025 Competition

Category Winner for “Scaling Innovation”: PEference



PEF: Made from Plant-based FDCA and BioMEG



PEF: 100% bio-based plastic with superior properties



High CO₂ & O₂ barrier to preserve drinks and functional ingredients



Fully recyclable, multiple recycling loops possible

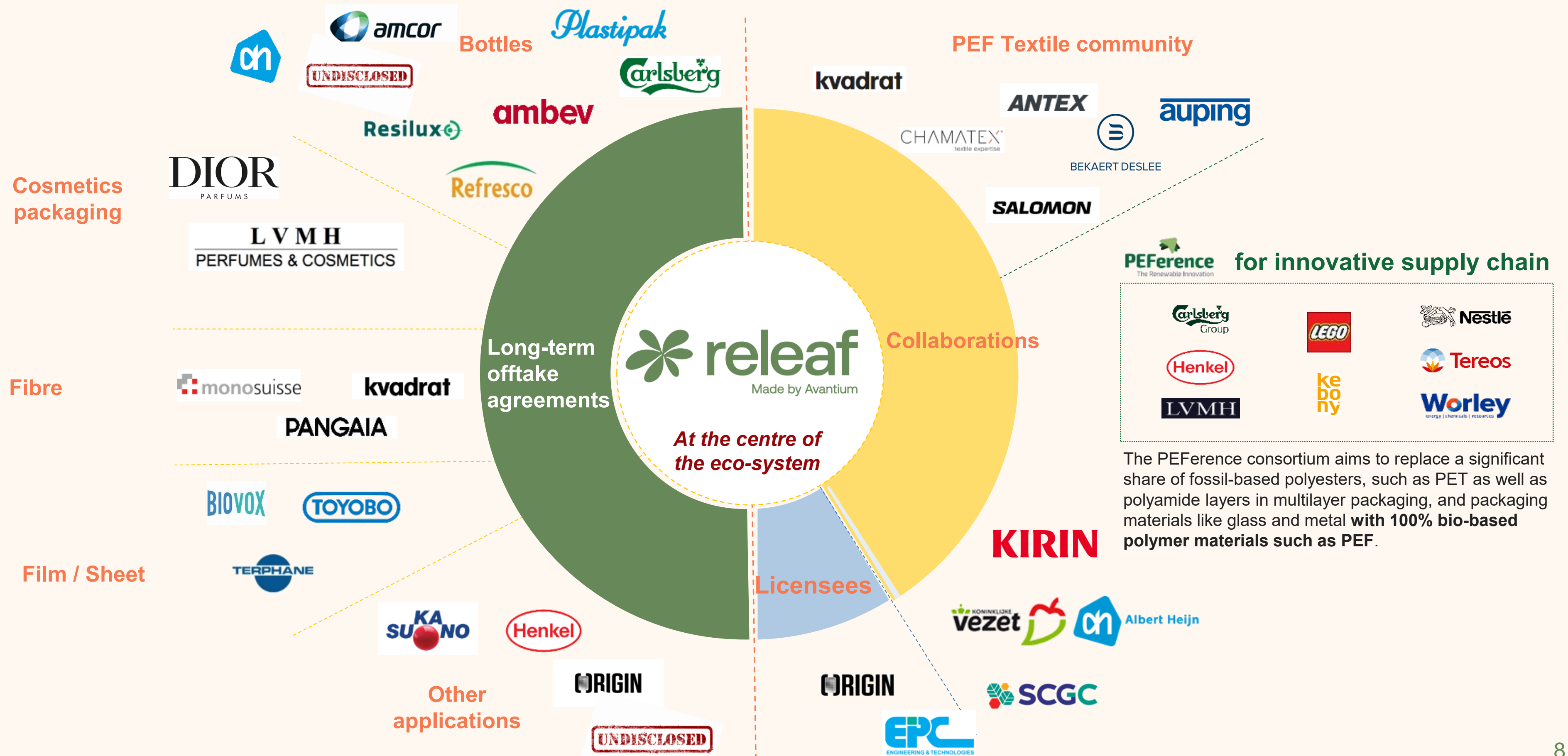


Can be used in existing bottling & recycling assets



Low carbon footprint owing to 100% bio-based nature

Driving the value chain with partners

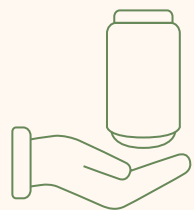


The PEPreference consortium aims to replace a significant share of fossil-based polyesters, such as PET as well as polyamide layers in multilayer packaging, and packaging materials like glass and metal with 100% bio-based polymer materials such as PEF.

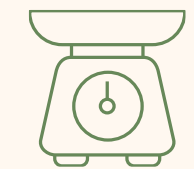
It is imperative that brands diversify their packaging options: releaf® is a perfect fit!



Preserves functional ingredients



Fully bio-based and chemically controlled process



Light-weighting, costs and emissions saving



Recyclable packaging



Becoming industrially available to help you meet your 2030 targets



Learnings

- Have better technical properties than the incumbent solution
- Have an end_of_life solution for your products
- Prepare a convincing LCA picture of your process/products
- Be prepared to adsorb delays/additional costs
- Have an overview of regulatory and legislative requirements (a.o. permits, REACH, Food Contact Approval) and acquire them
- Have the whole value chain on board of your project
- Have good interactions with the local environment / use your leverage at the right moment (e.g. local subsidies etc)

- Thanks for your kind attention!

Contact

Ed De Jong

VP Development

ed.dejong@avantium.com

Acknowledgement

