



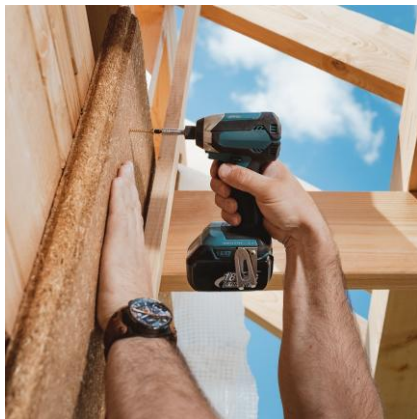
VestaEco

Polish producer of bio-based composite materials for construction, furniture and industrial applications.

Warsaw 2026

Contractors – timber frame construction

The main group of clients are contractors specialized in timber frame building technologies eg. builders of timber frame houses, manufacturers of prefabricated wood houses, roofers, strawbale builders.



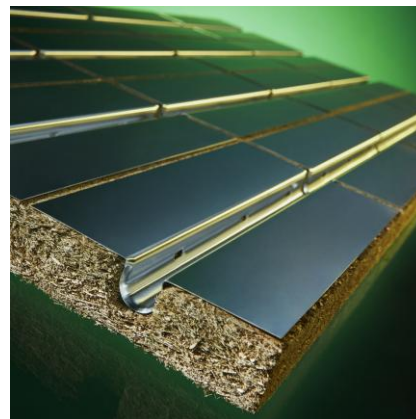
Contractors – general&green construction

An important group of clients are contractors specialized in green construction eg. builders of massive wood houses, hempcrete, light clay builders, renovation and retrofit contractors.



Industry (furniture, furnishings)

A rising group of clients are industrial partners (furniture manufacturers, furnishings manufacturers) who tend to reduce the carbon footprint of their products by using renewable materials.





Natural

Healthy material based on natural resources.

Low carbon

The use of fibres found in annual plants confirmed by DIN Biobased >85% certificate.

Innovative

Environmentally friendly production process thanks to the use of innovative DefibraTech 1.0 technology.



www.vestaeco.pl





Production plant

The plant is located in the area of the industrial park in Wielki Łęck (Voivodeship of Warmia and Mazury) in Poland. The location in the area with a strong agricultural tradition simplifies the supply logistics of raw material and allows to reduce its cost. The company owns a modern production hall, storage facilities as well as transportation fleet comprising logistics and agricultural machinery. We have at our disposal the headquarter office in Wielki Łęck as well as the sales office in Warsaw.



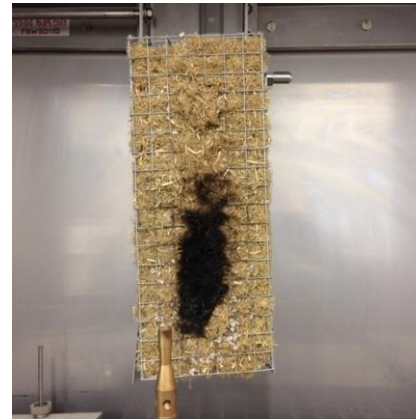
Technological line

The existing technological line enables industrial production of rigid insulation boards with the use of hot pressing process. The line comprises straw fibre production module with the capacity of up to 1000 kg/hour, drying and storage modules as well as the automated pressing section. The pressing section is equipped with a forming station, cold press and a multi-opening hot press (12 openings). The post-production processes including glue-bonding, cutting and packaging are done manually in a smaller production hall.



In-house R&D lab

Own Research&Development lab enables in-house product quality control as well as new product development. It is equipped with universal testing machine for testing mechanical characteristics of the boards, thermal conductivity measurement equipment as well as reaction to fire testing equipment.



ECOFUNC project

Development & upscaling

- Task 2.6 Surface modification of cereal straw fibers
- Task 3.3 Development of straw-reinforced core boards
- Task 4.1 Manufacture of full-sized SRC panels and core boards

Value chain completion

We complete the value chain by pretreating raw materials, developing processes at lab scale, scaling up, and delivering components to downstream partners.

IKOP provision

As a full industrial member of BIC, we contribute the co-financing required to achieve the specified IKOP levels (15% for IA and 5% for RIA).

Task 2.6



Modified fibres
before drying



Drying and
mixing with low
 T_m PHA dry
powder



www.vestaeco.pl



Co-funded by
the European Union



Circular
Bio-based
Europe
Joint Undertaking



Bio-based Industries
Consortium

ecôfunc

